

PULSE PLATFORM

Developed as an advanced solution for sound and vibration measurement, Brüel & Kjær's PULSE™ is the analyzer platform of the future. With its vast range of software applications and hardware configurations PULSE is today probably the most popular analyzer solution in the world.

Real-time

The real-time capability of PULSE means that there is the closest possible link between cause and effect. You see your analysis results instantaneously on-screen as they are measured, thus enabling you to validate your data immediately.

Multi-analysis

The multi-analysis side of PULSE means that you can perform FFT, 1/n-octave (CPB), order, and overall analyses simultaneously on the same or different channels/signals while displaying real-time results on screen.

PC-based

– Your PC is Your Analyzer!

PULSE gives you the freedom to make measurements in the field and process your data wherever you want. PULSE makes your PC your personal analyzer by leveraging rapidly growing PC-processor performance for real-time signal processing. Using standard PC hardware and software, PULSE is easily upgraded with off-the-shelf components.



PULSE Applications

- | | | |
|--|---|--|
| 3598 PULSE Pass-by | 7761 Acoustic Test Consultant | 7789 Time File Management |
| 7698 PULSE Sound Quality | 7764 Multiple-Input Multiple-Output Analysis | BZ 5231 IDA® driver for I-DEAS® Test |
| 7703 Vold Kalman Filter | 7765 Structural Dynamic Test Consultants | BZ 5265 Zwicker Loudness |
| 7748 Sound Power | 7767 PULSE Data Manager | BZ 5277 Order Analysis |
| 7752 Noise Source Identification | 7768 Beamforming | BZ 5301 Psychoacoustic Test Bench |
| 7753 Modal Test Consultant™ | 7769 Auxiliary Parameter Logging | BZ 5305 Sound Power Value Packs |
| 7755 PULSE Bridge to ME'scope™ and MATLAB® | 7772 SSR Analysis | BZ 5370 Robot Option for 7761 |
| 7756 PULSE WorkFlow Manager | 7773 Envelope Analysis | BZ 5443 PDM Acquisition Browsing License |
| 7758 PULSE Material Testing | 7774 PULSE Interface to Sony® SIR-1000 | BZ 5444 PDM Browsing License |
| 7760 Operational Modal | 7780 Spatial Transformation of Sound Fields Component | 3rd Party Applications |

PULSE Real Time Analyzers

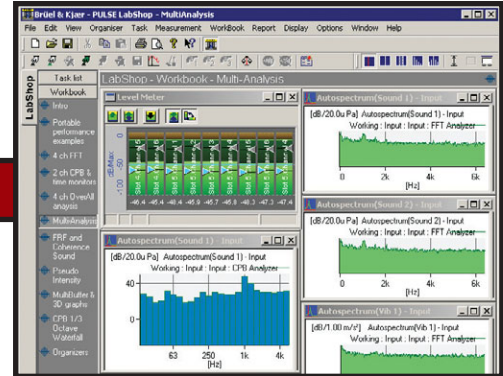
- | | | |
|---------------------------------|---------------------|-------------------------------------|
| 7700 Noise & Vibration Analysis | 7701 Data Recorder | 7707 Analysis Engine |
| 7770 FFT Analysis | 7702 Order Tracking | 7781/82/83 PULSE Lite |
| 7771 CPB Analysis | 7705 Time Capture | 7759 PULSE Advanced Sound Intensity |
| 7709 Viewer License | | |

020248

Smart Transducers

As an intelligent front-end, PULSE supports smart transducers, i.e., transducers with built-in identification. This means a significant reduction in setup time, almost complete elimination of cable connection errors, and automatic transducer sensitivity setting. PULSE supports Transducer Electronic Data Sheet(s) (TEDS) according to the IEEE P1451.4.

Multi-analysis example showing both real-time FFT and 1/In-octave (CPB) spectra as well as the Level Monitor



Ease of Use – PULSE Project is Here to Help

The PULSE Project is a powerful data management tool that stores all measurement details such as setup and calibration information. PULSE comes with predefined application projects that can be adapted and modified as required.

A project or template can contain any number of task groups, and the task bar can also contain user-defined tabs that let you quickly switch from one application to another

